

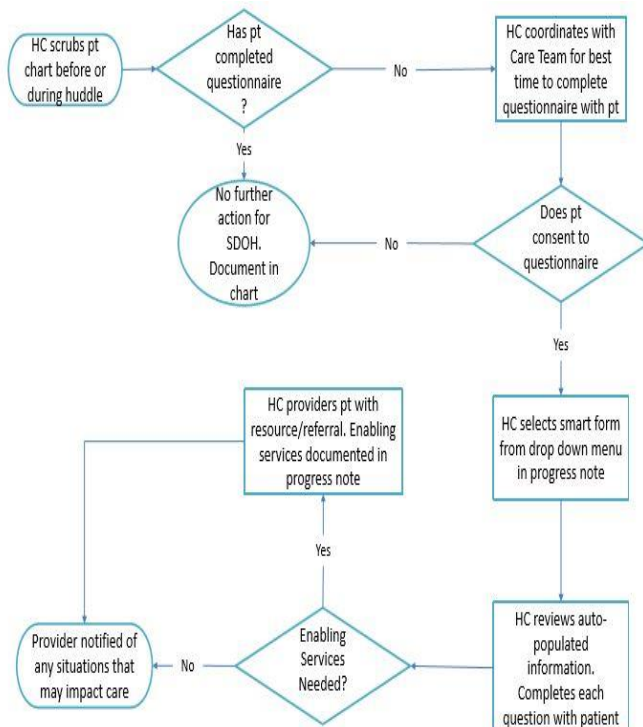
## Winters Healthcare's Use of PRAPARE to Improve Screening Rates for Social Determinants of Health

Winters Healthcare administered PRAPARE with their adult patient population (18 years or older). Winter's baseline screening rate for social determinants data was 16% for the first three months of the data collection period during the PRAPARE planning project. After an evaluation and experimentation period, the screening rate improved significantly to 72% for the remainder of the planning project. Winters has made targeted efforts to improve the utility of PRAPARE data for providers and patients that is actionable to educate staff and patients and tailor materials to the community.

Health coaches worked closely with medical assistants to assess the best time to administer PRAPARE with patients to minimize addition to clinic visit time and burden to staff. The interviews were conducted either before or after the patient's clinical visit based on recommendations from the medical assistants.

### What Worked Well

- **Engage Staff:** Winters allowed all staff to be involved to design a workflow that would work best in their setting, which helped gather buy-in.
- **Clearly Communicate:** Winters had candid conversations with providers and support staff to show the value of PRAPARE data in improving care
- **Carefully Coordinate:** Careful coordination and clear communication helped reduce burden on staff



### PRAPARE Implementation Takeaways

- **Education:**
  - Educated care teams about importance of PRAPARE. Guided care teams to see where PRAPARE could overlap with work they were already doing
  - Trained health coaches to educate patients about why they were collecting social determinants data
- **Provider Utility:**
  - Integrated a “debrief” with the provider as part of the intervention: after PRAPARE data is collected, health coach briefly reports out any factors that may affect patient’s care
- **Patient Utility:**
  - Reached out to local partners to improve quality of resource list/referrals
- **Tailored Material:**
  - Incorporated patient feedback to improve resource list and make culturally relevant translations of PRAPARE form

### Impact of PRAPARE at Winters

- Targeted clinical care and outreach efforts to focus on specific risk factors in the community.
- Determined which community relationships needed more attention and reinforcement based on needs identified by PRAPARE.
- Provided weekly reports on the number of patients screened to support staff incentives for screening, quantified the number of screenings completed, and tracked which enabling services were referred to patients.